

AUBERGINE ART

GALLERY & PICTURE FRAMING

THE LAND, THE SEA & THE STILL LIFE



A CELEBRATION OF COLOUR, LIGHT & COMPOSITION

PRIVATE VIEW

YOU ARE CORDIALLY INVITED TO ATTEND THE OPENING
OF 'THE LAND, THE SEA & THE STILL LIFE'

WEDNESDAY 5TH OCTOBER FROM 4-8PM

DRINKS & REFRESHMENTS AVAILABLE

THE LAND, THE SEA & THE STILL LIFE

Our artists come from far and wide and include Vanessa Bowman, known for her flat perspective still lifes, Richard Colson, painter of still lifes, landscapes and cityscapes, whose works hang in the House of Commons and the House of Lords.

Andrew Holmes, master of the photo-realistic still life and specialist in food paintings and Tanja Modersheim, who paints detailed and dramatic still lifes in the style of the Dutch Masters.

Regarding the Landscapes and Seascapes side we are proud to introduce Hannah Davies, a passionate surfer and painter of Cornish beaches, Colin Cook who lives and paints near Whitby in North Yorkshire, captures the essence of the constantly changing light and scenery of the coasts, moors and lakes in this rugged landscape, and Dorothea Carr, whose subtle Seascapes and still lifes are both relaxing and uplifting.

Joining these are gallery artists Penny Rees, whose vivid flower paintings are always a joy and Lana Okiro, a versatile painter of still lifes, flowers and birds in thick impasto, complemented by handmade fused glass from Teresa Chlapowski, a glass maker whose reputation and popularity continues to grow.

ALL EXHIBITION IMAGES ARE AVAILABLE
TO VIEW ON OUR NEW WEBSITE:

WWW.AUBERGINEART.CO.UK

THE EXHIBITION WILL RUN FROM
WEDNESDAY 5TH OCTOBER - TUESDAY 1ST NOVEMBER

ANDREW B HOLMES



'Untitled' (Pancake Stack) oil on canvas
15 3/4 x 20 1/8 in / 40 x 51 cm



'Baked Beans' oil on canvas
28 x 28 in / 71 x 71 cm



'The Promise' oil on canvas
24 1/8 x 29 7/8 in / 61 x 76 cm



'Pin Up, 2013' oil on canvas
31 7/8 x 40 1/8 in / 81 x 102 cm

We are incredibly excited to welcome Andrew Holmes to Aubergine Art. This versatile painter can turn his hand to many subjects including landscapes, figures and much in between, but it is his incredible paintings of food that really set us on fire! Looking good enough to eat, this amazing series of work is utterly irresistible.

TANJA MODERSCHEIM



‘Apricots and Pomegranates’ oil on wood
7 7/8 x 11 3/4 in / 20 x 30 cm



‘Three Figs’ oil on wood
9 7/8 x 6 3/4 in / 25 x 17 cm



‘Gatekeeper’ oil on wood
4 x 5 7/8 in / 10 x 15 cm



‘Whelk, 2013’ oil on wood
4 x 5 7/8 in / 10 x 15 cm

Tanja Mödersheim is best known for her still life paintings which celebrate the beauty of fruits, produce, tableware and other culinary items. The paintings are detailed (driven by her background in science) and produced in a traditional, figurative style using techniques common in 17th-Century Holland. The attention to detail and anatomy is a nod to the renewed interest in the sciences during the Dutch Golden Age. The use of light-dark drama contributes to these jewel-like, atmospheric paintings.

LANA OKIRO



'Sunflowers' oil on canvas
39 3/8 x 39 3/8 in / 100 x 100 cm



'Still Life with Grapefruit' oil on board
8 1/4 x 11 3/8 in / 21 x 29 cm



'Red Grapes' oil on board
9 7/8 x 13 3/4 in / 25 x 35 cm



'Poppy Field' oil on canvas
40 x 60 in / 101.6 x 152.4 cm

Lana works in oil which gives great depth of colour and allows for the generation of heavy impasto paintings. Her distinctive style continues to develop with production of artworks and is also influenced by works of great masters whose styles she admires like Paul Cézanne and Claude Monet. These highly contemporary interpretations incorporate distinctive, bold strokes and bright colours, creating vivid works with a surprising element of subtlety.

PENNY REES



'Summer Colour' oil on board
12 x 16 in / 30.5 x 40.6 cm



'Sun Room Flowers' oil on board
24 x 20 in / 61 x 50.8 cm



'Royal Blue Vase' oil on box canvas
40 x 40 in / 101.6 x 101.6 cm



'Floribunda' oil on box canvas
40 x 40 in / 101.6 x 101.6 cm

Penny Rees lives, breathes and paints colour. Her vivid still lifes of flowers are rendered in oils mainly using a palette knife, allowing thick swathes and daubs of colour to sing against the canvas. Always a delight to behold, Penny is one of our most popular gallery artists.

VANESSA BOWMAN



'Fruit Bowl with Quail's Egg' oil on card
10 x 12 in / 25.4 x 30.5 cm



'Pink Cyclamen and Squashes' oil on card
10 x 12 in / 25.4 x 30.5 cm



'Garden Flowers in Turquoise Jug'
oil on card - 16 x 18 in / 40.6 x 45.7 cm



'Pink Cup and Summer Flowers' oil on card
10 x 12 in / 25.4 x 30.5 cm

Vanessa Bowman is a painter of repute, known for her skills in composition and colour balance. Each of her still lifes observes the simple beauty of everyday objects – a moment captured in time. A vase of garden flowers, a bowl of lemons (their acid yellow placed against the deep magenta plum), a striped shell – each is placed deliberately within the framework of the painting combining muted subtle colour with jewel-like accents

RICHARD COLSON



'Pink Azalea II' oil on canvas
16 x 20 in / 40.6 x 50.8 cm



'Westminster Palace'
pastel on cartridge paper - 21 x 22 in



'Pool of London'
oil on linen - 12 x 16 in



'Westminster and the Thames'
oil on canvas - 14 x 18 in

Richard Colson has shown at many fine galleries and in addition his work is exhibited in the House of Commons and the House of Lords. Richard is a member of the Chelsea Arts Club and London Sketch Club. There is a confidence in his mark making that shines through his work, both in his loose, impressionistic landscapes and cityscapes and his elegant, still lifes. Working in both oil and pastel, Richard is a versatile and sophisticated painter.

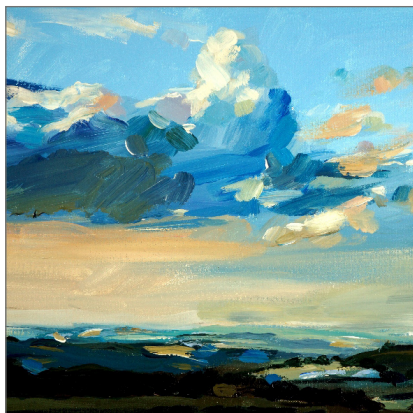
COLIN COOK



'Broken Light Across Hard Knot Pass'
acrylic on canvas - 18 x 14 in



'Lowes Water from the Forest Path'
acrylic on canvas - 16 x 12 in



'Summer Evening Goathland'
acrylic on canvas - 16 x 12 in



'Saltwick Bay Afternoon'
acrylic on canvas - 16 x 12 in

Colin lives and works near Whitby in North Yorkshire. The subject matter and inspiration for his paintings is taken from the North Eastern coast and moors and the Lake District. His work is representational, based on observation of the constantly changing and intriguing light. He seeks to create atmosphere through the use of dramatic light and bold mark making. Compositional tension is important and created by the careful arrangement of different pictorial elements; colour, texture, light etc.

DOROTHEA CARR



'West Wittering Summer'
oil on canvas - 90 x 120 cm



'Elisabeth's Flowers'
oil on canvas - 30 x 40 cm



'The Cob in Autumn Lyme Regis'
oil on canvas - 76 x 122 cm



'Autumn Hydrangea and Honesty'
oil on canvas - 60 x 30 cm

Dorothea Carr's work illustrates perfectly that you can make a big impact using a tonal palette. Her washy, ambient seascapes are filled with light and expression, while her still lifes and interiors manage to convey light and texture with soft, muted brushstrokes.

HANNAH DAVIES & TERESA CHLAPOWSKI



'Glassy Sand' oil on canvas
36 1/4 x 36 1/4 in / 92 x 92 cm

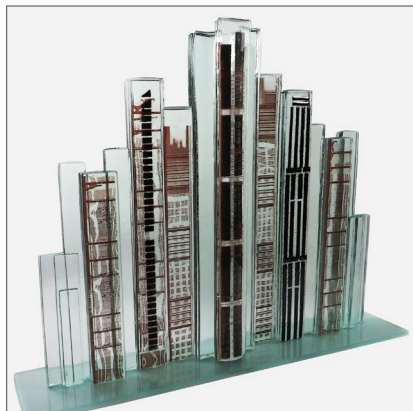


'Sky Sand' oil on canvas
39 3/8 x 47 1/4 in / 100 x 120 cm

Hannah's paintings explore the theme of reflections and are inspired by the Cornish seascape. Her work achieves a mysterious atmosphere by using transparent layers of oil paint, built up slowly, so that each layer is still visible on the canvas.



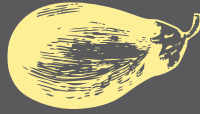
'Blue Lagoon Bowl' fused glass with silver leaf
11 1/8 x 12 5/8 x 3 1/8 in / 28 x 32 x 8 cm



'Metropolis' Fused Glass with Decals
47 x 37 x 10 cm

Teresa is a member of The Chelsea Art Society (CAS), The Association of Polish Artists in Great Britain (APA) and The Contemporary Glass Society (CGS).

She creates both sculptural and functional pieces in fused glass through kiln and sand cast glass, using colour and texture in a dynamic and expressive way, to infuse even simple pieces, such as plates and bowls, with a joy and vitality.



STAGE 1
OF OUR NEW WEBSITE
WWW.AUBERGINEART.CO.UK

NEW ONLINE SHOP
NEW ARTISTS & ARTWORK
EXHIBITIONS
NEWS
FRAMING & SERVICES
NEW CONTENT WEEKLY

JOIN OUR MAILING LIST TO RECEIVE INVITATIONS
TO EXHIBITIONS, SPECIAL DISCOUNTS & OFFERS

1 Queens Road, Wimbledon, London. SW19 8NG
Email: gallery@aubergineart.co.uk Tel: 0208 947 7838